

PolaMail

Installation guide

For use with LT-3100 and LT-3100S

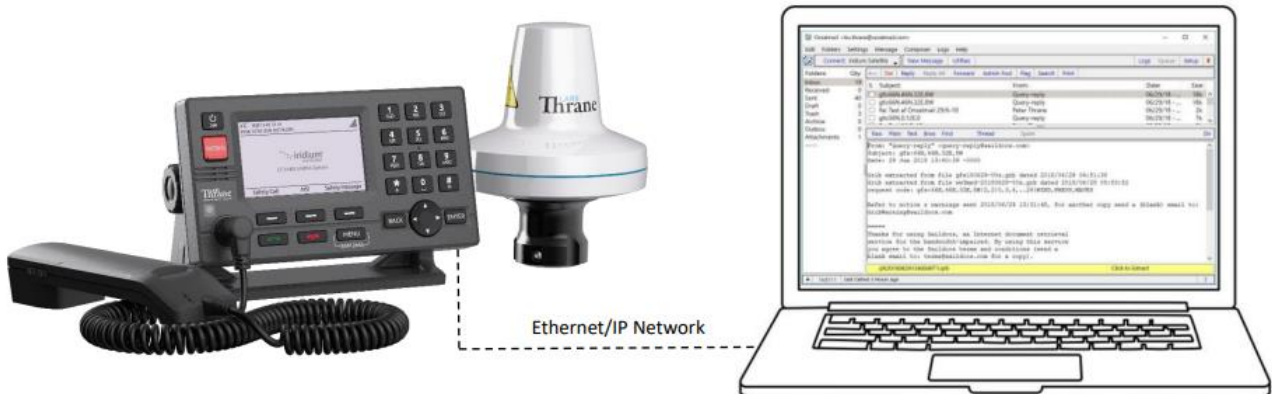
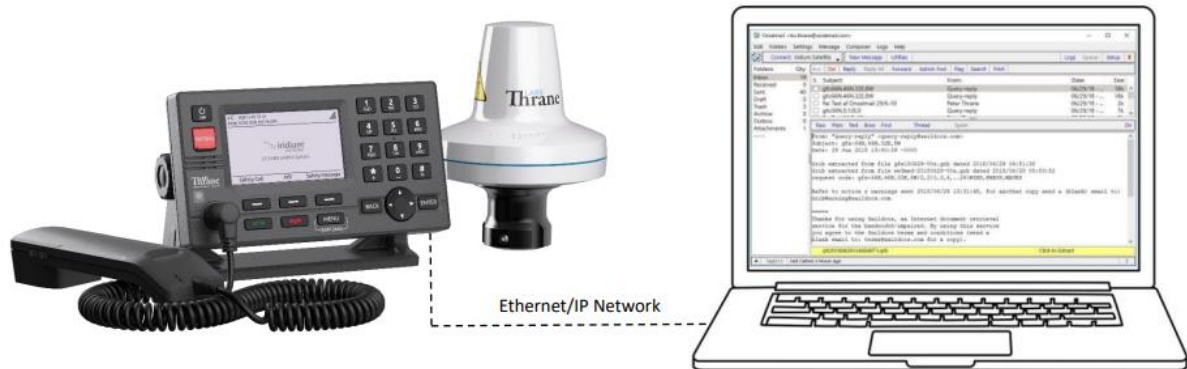


Table of Contents

1. Setting up network on the LT-3100S	3
2. Installing and setting up PolaMail	5
3. Adding the LT-3100S to PolaMail	8
4. How to set a fixed or automatic IP address	11

1. Setting up network on the LT-3100S

1. Connect your Computer to the LT-3100S using a LAN cable connected directly between the computer and LT-3100S.



2. Turn on the LT-3100S and press *Menu – System network* to look up its IP address
3. On your computer set up a fixed IP address in the same range as the LT-3100S IP address. Preform **Chapter 4 step 1 to 6** on how to set up a fixed IP address.
4. Next, open a web browser and type in the IP address of the LT-3100S. Username and Password for accessing the LT-3100S web page are “admin”.
5. Go to the tab *Configurations – Data*

Enable serial over network and press apply.

Configuration - Data

Modem data options

Enable serial over network

Enable serial over Bluetooth

Apply

6. Go to the tab *Configurations – network*


Under Ethernet interface set the settings as below:

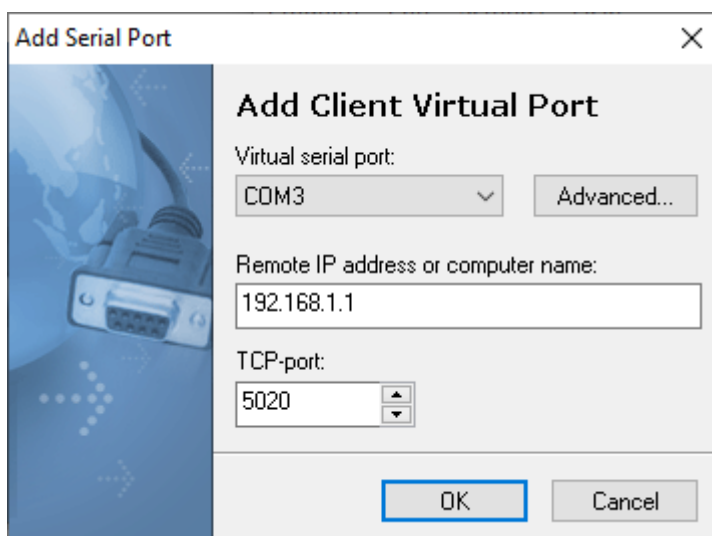
Ethernet interface

Mode	DHCP server ▼	
IP address	192.168.1.1	
Netmask	255.255.255.0	
DHCP server range	192.168.1.100	192.168.1.200

7. Restart the LT-3100S terminal.
8. Now, set your computer back to automatic IP address (DHCP).
Preform **Chapter 4 step 7** how to set up a fixed or automatic IP address
9. Go to <https://www.polaris-as.dk/polamail/>, download the support file **Serial Port Redirector** and install this on your computer in a place/directory of your choice.
Note: The Serial port redirector requires a license key which is provided sending a request for a license key to Tech@Polaris-as.dk including your Iridium phone number and serial number of the LT-3100 or LT-3100S.
10. Run Serial Port Redirector



11. Click the  button and select a virtual serial port number from the drop-down list., for example, COM3.
Enter Remote IP which is the IP address of the LT-3100S (this was retrieved in step 2), in this example 192.168.1.1.
TCP-Port should always be set at 5020.



12. Click [OK] to create the virtual serial port.

2. Installing and setting up PolaMail

To run the PolaMail requires a PC with Windows 10 or newer.

1. Go to <https://www.polaris-as.dk/polamail/>, download and install PolaMail for windows.
2. Having installed the PolaMail client, below screen will appear.

Enter data in this as follows:

Account: Enter the mail address you want. Note the mail address must end with @polamail.com

Password: Enter a password of your choice.

Display Name: Enter the name that you want displayed (e.g. your real/given name)

SatPhone number: Type in your Iridium satellite phone number (12 digits)

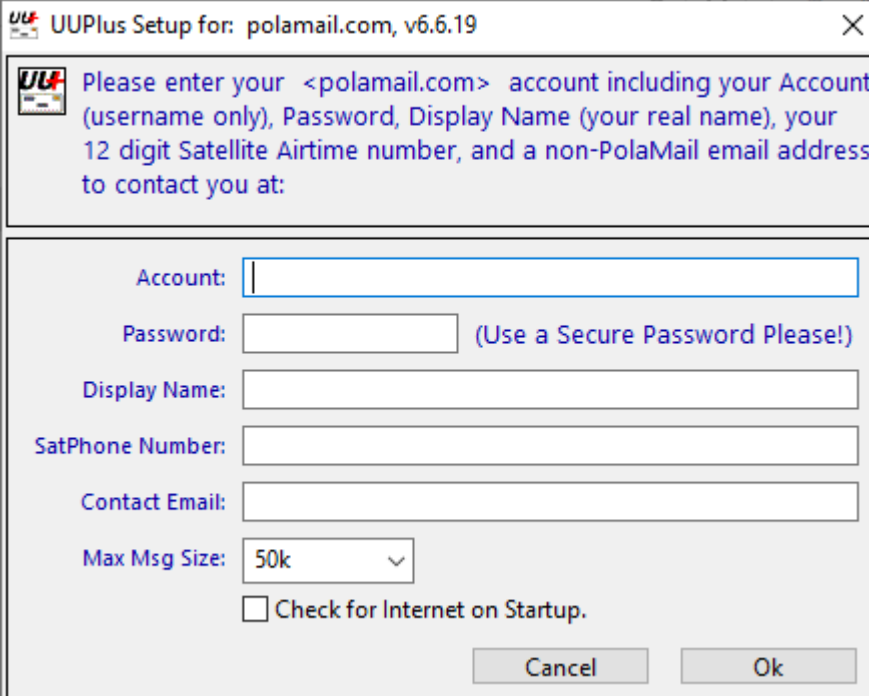
Current Email: Enter your current email address here (email at which you may be reached)

Max Msg Size: Select maximum allowed message size from drop down list.

Note 1: The max. data speed over the Iridium satellite system is 2.4kbs which means that e.g. a 1MB message (incl. attachment) may take up to 7min. to transmit or receive.

A notification will be send to PolaMail if an incoming message exceeds the limit set. The oversized message will instead be sent to the email address set in the "Current Email" field.

Note 2: This setting sets the max. message size incoming and outgoing in the PolaMail client, irrespective of which network is used for the data exchange, satellite or terrestrial.



UUPlus Setup for: polamail.com, v6.6.19

Please enter your <polamail.com> account including your Account (username only), Password, Display Name (your real name), your 12 digit Satellite Airtime number, and a non-PolaMail email address to contact you at:

Account:

Password: (Use a Secure Password Please!)

Display Name:

SatPhone Number:

Contact Email:

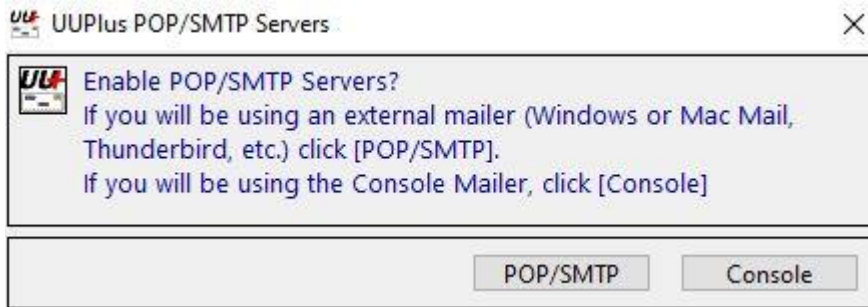
Max Msg Size: 50k

Check for Internet on Startup.

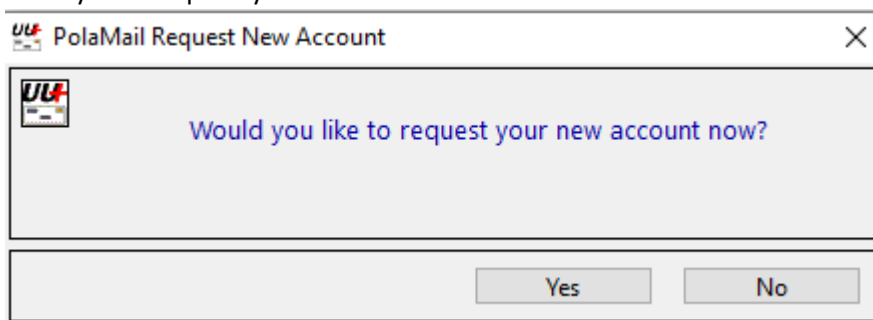
Cancel Ok

3. Click [OK]

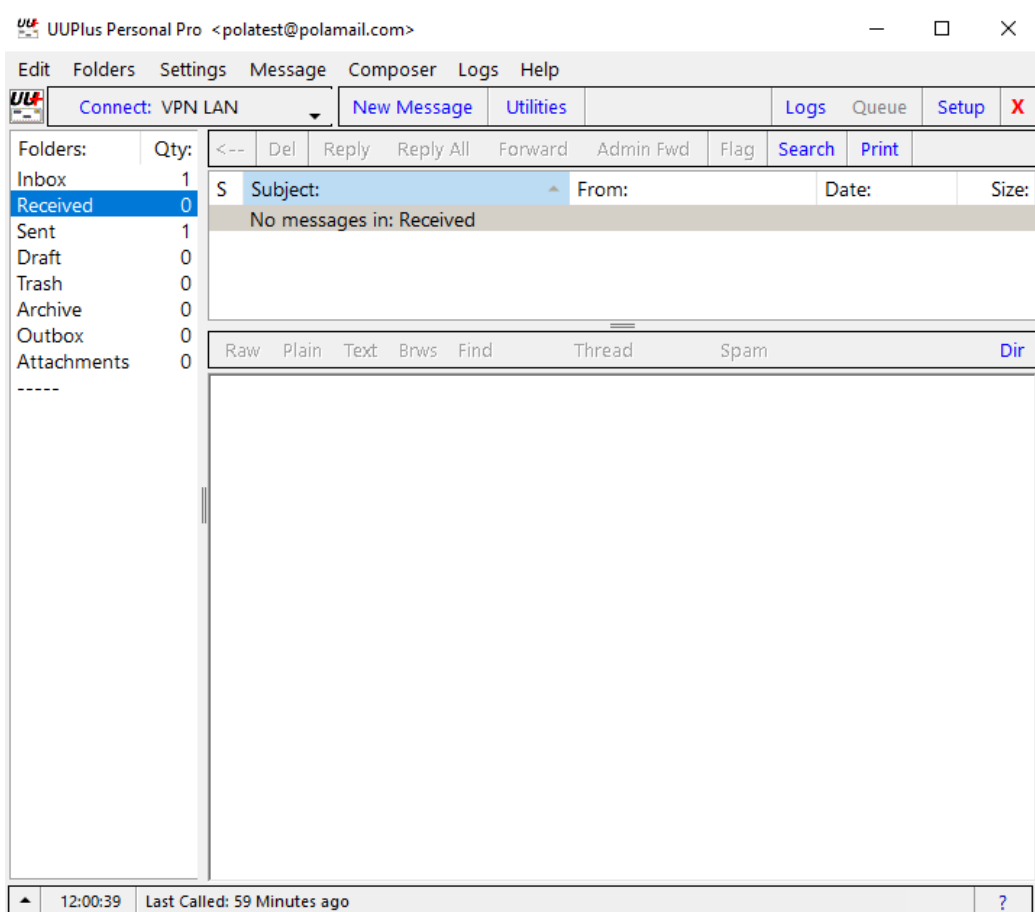
4. In the *UUPlus POP/SMTP Servers* window coming up, click [**Console**]



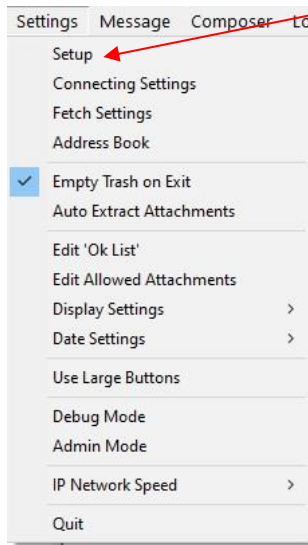
5. Press yes to request your new account



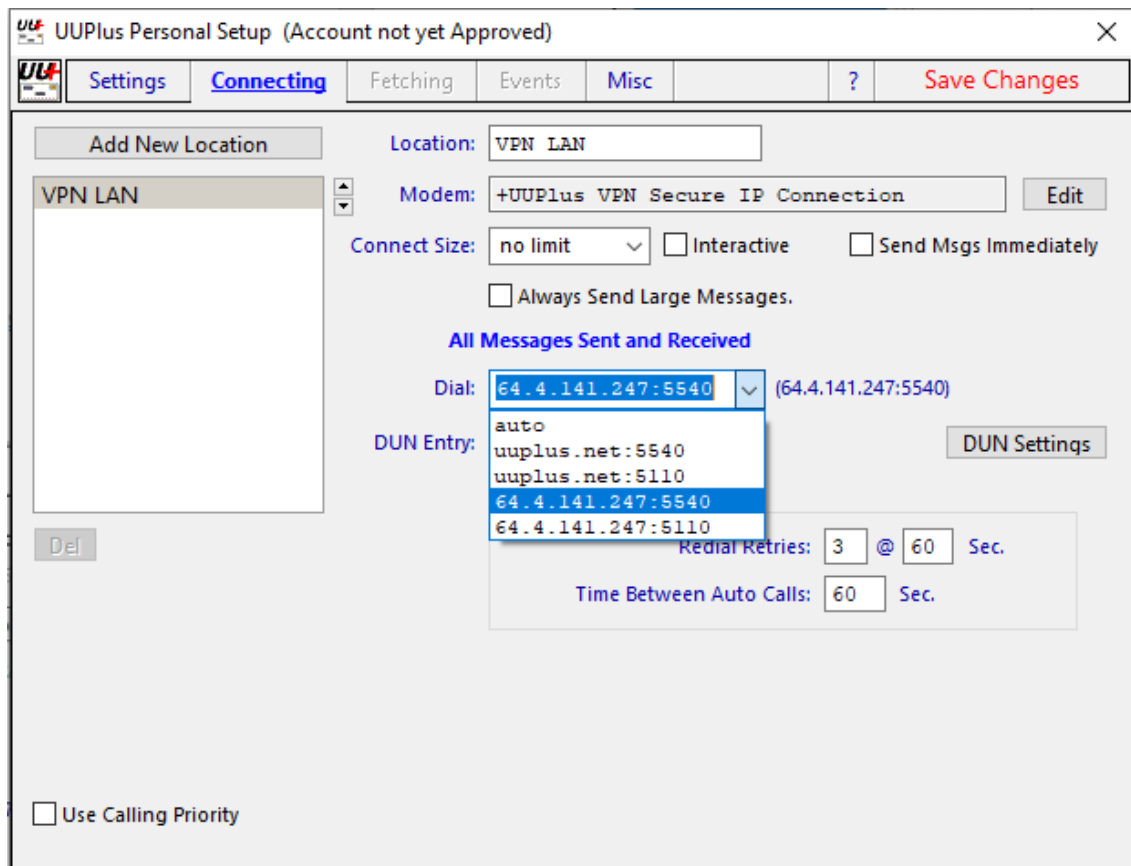
6. The PolaMail client will now start and display as below.



- Click the **[Settings]** tab in the PolaMail client and select **[Setup]**



- In Setup-screen select **[Connecting]** tab and choose **64.4.141.247:5540** in the drop down field **[Dial]**.
Click **[Save Changes]** and the PolaMail client has now been setup.



3. Adding LT-3100S to PolaMail

1. In the PolaMail setup screen [Connecting] tab click [Add New Location]

UUPlus Personal Pro Setup, SnID: K6065015

Settings **Connecting** Fetching Events Misc ? Close

Add New Location

Location: VPN LAN Signal/SMS Monitor:

Modem: +UUPlus VPN Secure IP Connection

Connect Size: no limit Interactive Send Msgs Immediately

Always Send Large Messages.

All Messages Sent and Received

Dial: 64.4.141.247:5540 (64.4.141.247:5540)

DUN Entry: LAN

Enable Pass-Through Login for this Location

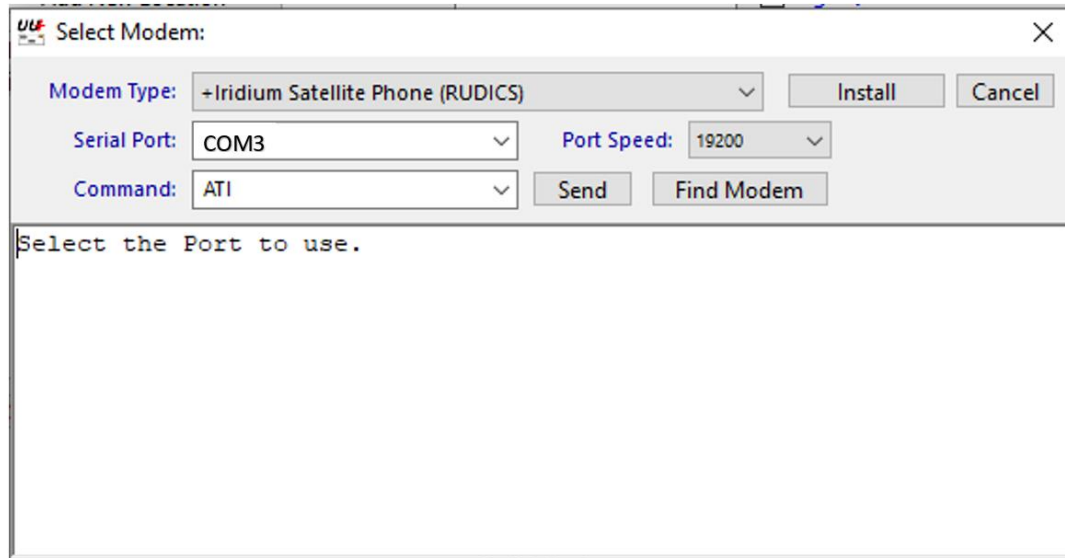
Use Calling Priority

Redial Settings

Redial Retries: 3 @ 60 Sec.

Time Between Auto Calls: 60 Sec.

- In the “*Select Modem*” window coming up enter information as indicated below:
Modem Type: +Iridium Satellite Phone (RUDICS)
Serial Port: Choose the serial port you have created at Serial Port Redirector (page 4), in this example COM3.



- Click [install].

4. For the Iridium Satellite modem it is recommended to set the **Connect Size** (this is for incoming messages only) to the same value as set in chapter 2, step 2. Select from the dropdown list.
Note: The overall limit set in chapter 2, step 2 takes precedence over this setting

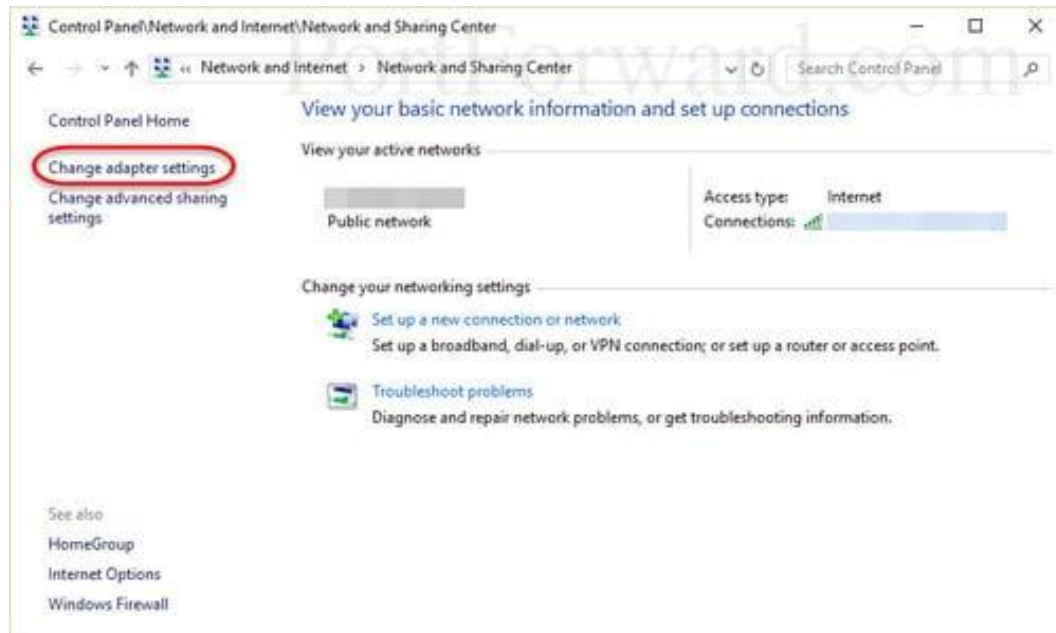
The screenshot shows the 'UUPlus Personal Pro Setup, SnID: K6065015' window. The 'Connecting' tab is active, displaying a list of locations on the left: 'VPN LAN' and 'Iridium Satellite'. The 'Iridium Satellite' location is selected. To the right of the list are several configuration options:

- Location:** Iridium Satellite
- Signal/SMS Monitor
- Modem:** +Iridium Satellite Phone (RUDICS) [Edit]
- Connect Size:** no limit (dropdown)
- Interactive
- Send Msgs Immediately
- Always Send Large Messages.
- All Messages Sent and Received**
- Dial:** ? (dropdown) (?)
- Enable Pass-Through Login for this Location
- Redial Settings:**
 - Redial Retries: 3 @ 60 Sec.
 - Time Between Auto Calls: 60 Sec.
- Use Calling Priority

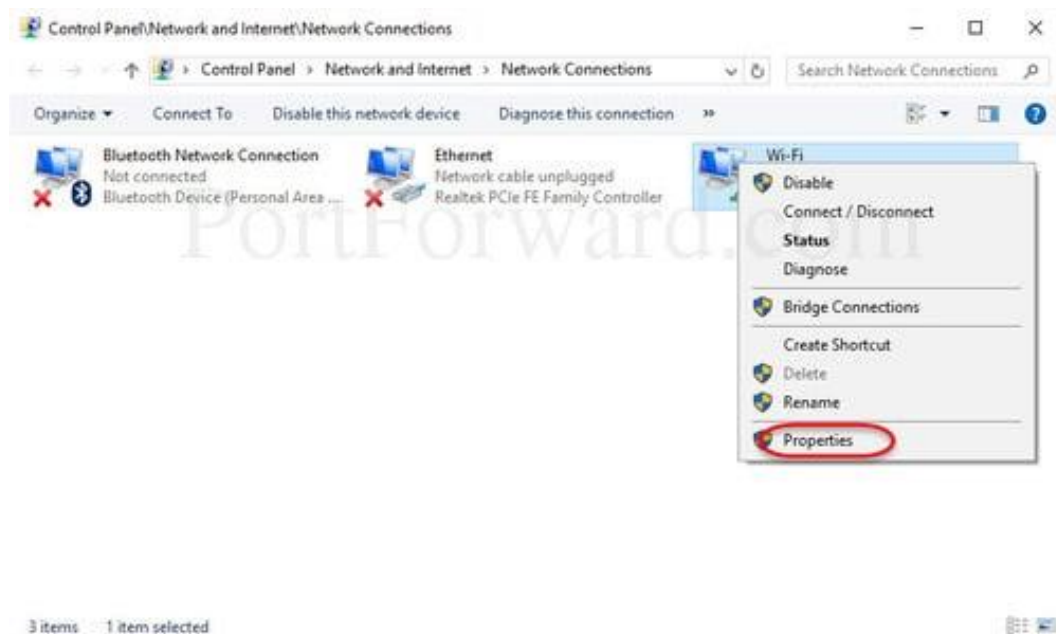
5. Click [Save change] followed by clicking [Close].
6. You are now ready to use PolaMail through your LT-3100S.

4. How to set a fixed or automatic (DHCP) IP address

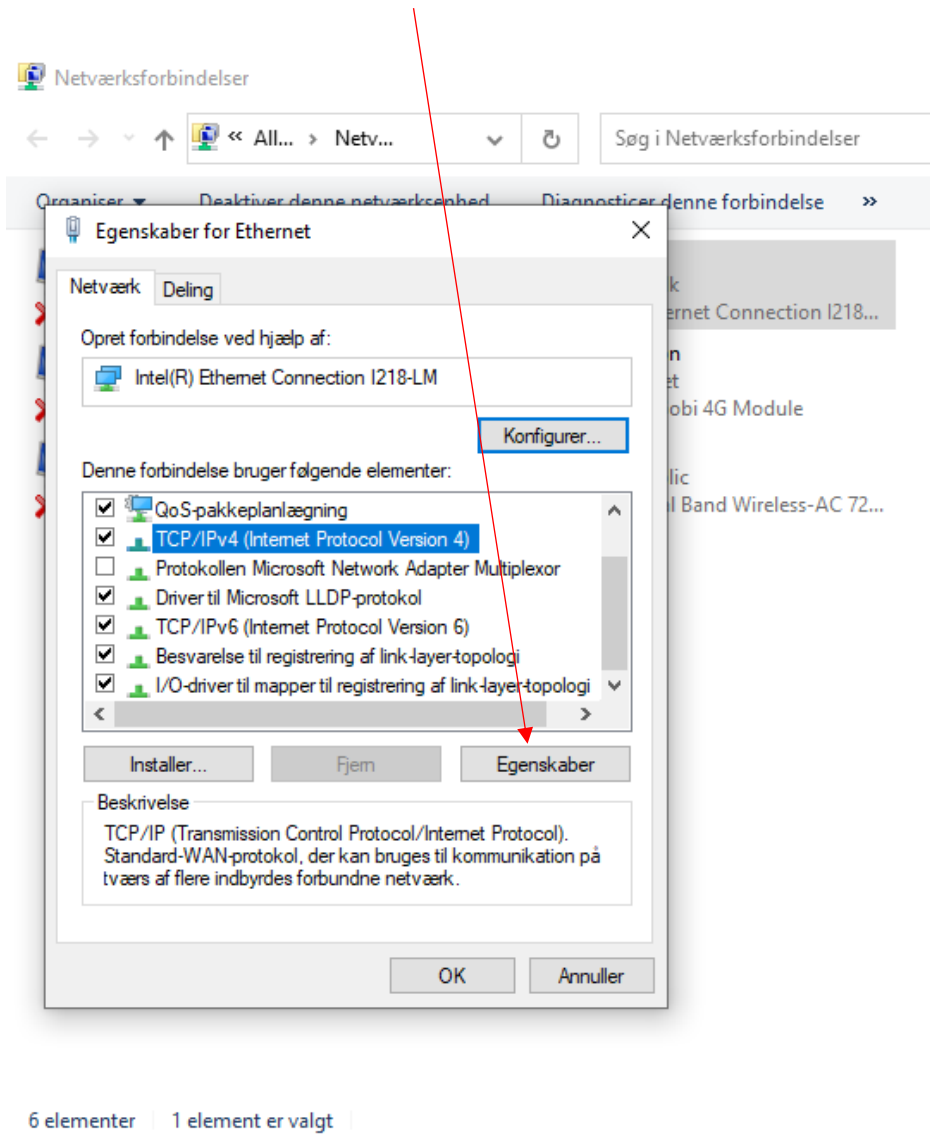
1. Go to Control panel at your computer
2. Click [**Network and internet**]
3. Click [**Change adapter settings**]



4. Right click [**Ethernet**] icon and select [**Properties**] in window coming up.



5. Select **TCP/IPv4** and press **[Properties]** (Egenskaber)



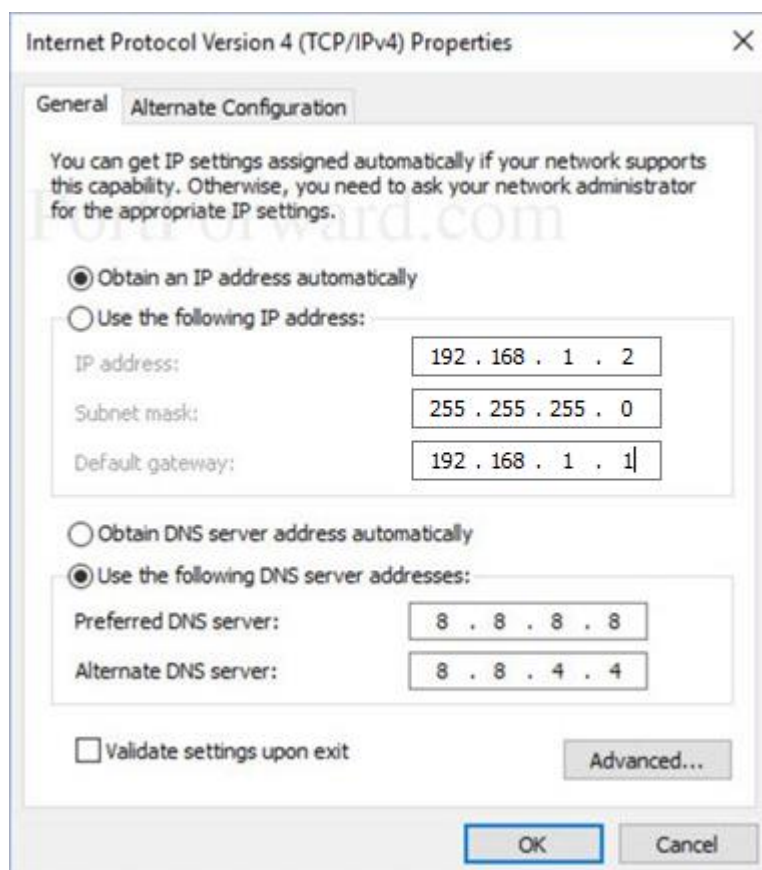
6. Select [**Use the following IP address**] option and enter an IP address in the same range as the LT-3100S.

For example, if the LT-3100S has IP address 192.168.0.1 set your settings as follows:

IP address: 192.168.1.2

Subnet Mask: 255.255.255.0

Default gateway: 192.168.1.1



Press [OK].

7. To change back to automatic IP address, click [**Obtain an IP address automatically**] **chapter 4 step 6.**