

# COMMON EQUIPMENT

POWER SUPPLIES, LOUDSPEAKERS,  
SIGNAL UNITS, CABINETS

**BECAUSE**

 when communication is critical

# VINGTOR STENTOFON

by ZENITEL GROUP

Vingtor-Stentofon products are developed by the Zenitel Group and comprise a range of high-quality communications equipment and systems. In business since 1901, Zenitel's products are recognized worldwide for offering high-quality communications for both offshore and onshore installations. Primary system offerings in the Vingtor-Stentofon product portfolio are Public Address and Intercom. Zenitel and the company's global partner network also integrate these systems with other security devices such as Radio, CCTV, Access Control and Alarm, for a comprehensive security solution.

Zenitel is world-renowned for its extensive knowledge in the design, construction, installation and maintenance of integrated marine communication systems. Leveraging our long-term experience serving the maritime industry, we offer an impressive portfolio and provide cutting edge solutions to vessels worldwide under the brand name of Vingtor-Stentofon. The Vingtor-Stentofon brand underpins our reputation as a supplier of the most flexible, reliable and advanced communication systems available today.

## MEETING YOUR REGULATORY REQUIREMENTS

All Vingtor-Stentofon products that form a part of critical communication have been tested according to IEC 60945 & IEC 60533 standards, and comply with SOLAS regulations and codes relevant to on-board communication systems. Our systems are delivered in accordance with the rules and regulations of all major classification societies.

## FOR ALL YOUR SALES & AFTER SERVICE REQUIREMENTS

Zenitel is a specialist provider of spare parts, repairs, maintenance contracts, and refit solutions. Responsibility and availability are our guidelines, and customer support and service a first priority.



1952



1964



1975



1996



2001



2009

<b>COMMON EQUIPMENT OVERVIEW</b>	<b>4</b>
----------------------------------	----------

<b>UPS POWER SUPPLY</b>	<b>5</b>
-------------------------	----------

<b>LOUDSPEAKERS</b>	<b>6</b>
---------------------	----------

LOUDSPEAKERS ACCOMMODATIONS	6
-----------------------------	---

LOUDSPEAKERS OUTDOOR AREAS & ENGINE ROOM	8
--	---

LOUDSPEAKERS EX AREA	9
----------------------	---

IP LOUDSPEAKERS	10
-----------------	----

<b>SIGNAL UNITS</b>	<b>11</b>
---------------------	-----------

<b>WALL-MOUNTED CABINETS</b>	<b>14</b>
------------------------------	-----------

POLYESTER CABINETS	14
--------------------	----

INDOOR STAINLESS STEEL CABINETS	15
---------------------------------	----

OUTDOOR STAINLESS STEEL CABINETS	15
----------------------------------	----

<b>FLOOR-MOUNTED CABINETS</b>	<b>16</b>
-------------------------------	-----------

STEEL CABINETS WITH FIXED FRAME	16
---------------------------------	----

STEEL CABINETS WITH SWING FRAME	16
---------------------------------	----



2011



2012



2013



2015



2016



2017

# COMMON EQUIPMENT

## UPS Uninterruptible Power Supply

A range of Online Uninterruptible Power Supply (UPS) units with extra battery cabinets are available. UPS is available in versions from 600 W to 3500 W, all with battery backup providing power for 30 minutes. If your installation requires even higher UPS capacity, additional units are available on request.

## Loudspeakers

The Vingtor-Stentofon loudspeaker range provides loudspeakers for all marine environments. The range includes flush mount and surface mount versions, fire retardant, watertight, horn, and EX speakers, etc.

## Signal Units

Different types of rotary lights, signal units, sounders, bells and flashing beacons are used to provide visual call indication in noisy areas.

## Cabinets for Outdoor Installations

A wide range of heavy duty cabinets are available. These are used in dusty areas as well as engine rooms and outdoor environments. The cabinets have an IP-66 protection rating, with a mounting plate for wall mounting.

## Cabinets for Indoor Installations

The available cabinets are assembled with fixed or swing 19" frames and readymade for building a module system. These cabinets are suitable for marine applications and are approved to IP-22 rating for critical installations and IP-20 rating for non-critical installations. All cabinets include grounding bar, cable inlet at bottom, mounting base and ventilation fan in the steel door or on top for cabinets with glass doors.

# UPS POWER SUPPLY



2970000011

## Online UPS with Extra Batteries 600W/30min Rack Mount

- Operating voltage 160 -280 VAC
- Output voltage 220/230/240 VAC
- Effect 600W
- Capacity minimum 30 minutes
- 2HU



**Size 2x modules (WxHxD): 440 x 89 x 332 mm**  
**Weight UPS: 13 kg Weight Battery: 16 kg**

Additional Information: 2970000021 incl.floor bracket  
115VAC: 29700000111 & 2970000121 incl.floor bracket

2970000013

## Online UPS with Extra Batteries 1500W/30min Rack Mount

- Operating voltage 160 -280 VAC
- Output voltage 220/230/240 VAC
- Effect 1500W
- Capacity minimum 30 minutes
- 2HU



**Size 2x modules (WxHxD): 440 x 89 x 608 mm**  
**Weight UPS: 31 kg Weight Battery: 43 kg**

Additional Information: 2970000023 incl.floor bracket  
115VAC 29700000113 & 2970000123 incl.floor bracket

2970000012

## Online UPS with Extra Batteries 1000W/30min Rack Mount

- Operating voltage 160 -280 VAC
- Output voltage 220/230/240 VAC
- Effect 1000W
- Capacity minimum 30 minutes
- 2HU



**Size 2x modules (WxHxD): 440 x 89 x 430 mm**  
**Weight UPS: 22 kg Weight Battery: 29 kg**

Additional Information: 2970000022 incl.floor bracket  
115VAC: 29700000112 & 2970000122 incl.floor bracket

2970000014

## Online UPS with Extra Batteries 3500W/30min Rack Mount

- Operating voltage 160 -280 VAC
- Output voltage 220/230/240 VAC
- Effect 3500W
- Capacity minimum 30 minutes
- 4HU



**Size UPS module (WxHxD): 440 x 177,4 x 670 mm**  
**Weight : 55 kg**

**Size Extra Battery mod. (WxHxD): 440 x 89 x 608 mm**  
**Weight : 40 kg**

Additional Information: 2970000024 incl.floor bracket



# LOUDSPEAKERS



## LOUDSPEAKERS ACCOMMODATIONS

- 100V line
- Adjustable power tapings
- Indoor use

2131000142

### CL-200T-AG Ceiling Speaker with Steel Firedome for Humid Rooms

- Made for marine environment
- Good audio quality
- Steel back box to reduce spread of fire
- Selector on the back to adjust power tapping to accommodate separate room sizes
- Cable glands increase stability of wire connectivity
- Supports loop wiring with 2 x M20 cable glands
- Includes thermal fuse and ceramic terminals
- Aluminum grille and fully painted chassis provides good corrosion properties



Size (Ø x D): 199 x 101 mm Weight: 1.45 kg

Additional Information: IP-55 (from front side only after proper ceiling installation)

2131000138

### CL-200T Ceiling Speaker with Steel Firedome

- Good audio quality
- Steel back box to reduce fire risk and spread
- Spring fasteners and screw holes for vibrating environments
- Spring fasteners only for non-vibrating environments
- Adjustable power tapping to accommodate separate room sizes
- Back box glands increase stability of wire connectivity
- Supports loop wiring with 2 x 20 mm back box glands
- Includes thermal fuse, transformer and supports 100V lines



Size (Ø x D): 199 x 101 mm Weight: 1.45 kg

Additional Information: IP-44

2131000131

### CLMQ-200T Ceiling Speaker

- 6" ceiling speaker delivers high quality sound with a flat frequency response curve
- Suitable for distribution of background music, announcements and voice messages with a high level of intelligibility
- Easily mounted with two spring clamps



Size (Ø x D): 199 x 83 mm Weight: 1 kg

2131000132 / 2131000141

### CL-135T / CL-135T-W/FD Ceiling Speaker

- 5" miniature ceiling speaker for small rooms or where space for mounting speakers is limited
- Robust, yet discreet design
- Easily mounted with two spring clamps
- 2131000132: CL-135T
- 2131000141: CL-135T-W/FD with Fire Dome



Size (Ø x D): 135 x 82 mm Weight: 0.5 kg

2131000133

### CLWT-135T Ceiling Speaker

- Made for demanding environments
- IP-55 Water ingress protection from all sides
- Good audio quality
- Plastic back box
- Spring fasteners and screw holes for vibrating environments
- Spring fasteners only for non-vibrating environments
- Adjustable power tapping to accommodate separate room sizes
- Back box glands increase stability of wire connections
- Loop wiring with 2x20mm backbox glands
- Includes thermal fuse, ceramic terminals and transformer for 100V lines



Size (Ø x D): 136 x 130 mm Weight: 0.6 kg

2131000140

### CLMQ-200-FD Fire Dome

- Fire Dome for CLMQ-200T

2131000205

### VES-561TF Ceiling Speaker Flush-Mounted, 6W

- Flush mounting
- Steel back box to reduce fire risk and spread
- With 100V line transformer
- Adjustable power tapping: 0.5W - 1.5W - 3.0W - 6.0W



Size (Ø x D): 165 x 112 mm Weight: 1.1 kg

2340020016

### SAFE-561IP(T) Voice Alarm Speaker, 6W

- Loudspeaker for voice evacuation and marine installations.
- With 100V line transformer
- Adjustable power tapping
- 0.5W - 1.5W - 3.0W - 6.0W



Size (Ø x D): 169 x 65 mm Weight: 1.3 kg

Additional Information: IP-55

3006100019

### CAR-4TF Wall-Mount Double-Faced Speaker, 4W

- Double faced loudspeaker for accommodation area
- Ideal for P.A. intercom and background music
- With 100V line transformer
- Adjustable power tapping 0.5W - 1.0W - 2.0W - 4.0W



Size (Ø x D): 152 x 90 mm Weight: 1.5 kg

Additional Information: Include cable 1m

3006100032 / 3006100033

### CW-4T / CW-AT/VOF On-Wall Speaker

- Wall loudspeaker for accommodation area
- Ideal for PA intercom and background music
- With 100V line transformer
- Adjustable power tapping: 0.5W - 1.5W - 3.0W - 6.0W
- CW-AT/VOF: with Volume Control & Override



Size (WxHxD): 250 x 170 x 88 mm Weight: 1.2 kg

2131000137

### BSWT-6T On-Wall Speaker for Bathroom & Humid Room

- 100V, 6W, IP-65
- Made for marine environment
- Good audio quality
- Corrosion-free plastic enclosure
- Cable entry in the bottom or from the back
- An integrated gasket enables watertight mounting without cable glands when using the rear cable entry
- Adjustable power tapping to accommodate separate room sizes
- Supports loop wiring with double cable entries
- Includes thermal fuse, ceramic terminals and transformer for 100V lines



Size (WxHxD): 133 x 133 x 70.5 mm Weight: 0.7 kg

3006100084

### SAFE-10PTF On-Wall Speaker for Bathroom

- IP-44
- Loudspeaker for voice evacuation and marine installations.
- Specially designed to fit tube light armature
- With 100V line transformer
- Adjustable power tapping
- Suitable for bathroom 1.0W - 2.5W - 5.0W - 10.0W



Size (WxHxD): 206 x 104 x 55 mm Weight: 0.8 kg

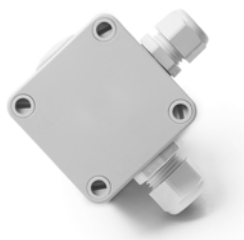
## LOUDSPEAKERS OUTDOOR AREAS & ENGINE ROOM

- 100V line
- Adjustable power tapplings
- Suitable for outdoor areas and engine room

3006090476

### JB-15T Junction Box

- Junction box for loudspeaker type VLS-15TF
- 1 x PG11 & 1 x PG13.5 Blank Plug



Size (WxHxD): 97 x 90 x 58 mm Weight: 0.12 kg

Additional Information: IP-66

2131000206

### VLS-15TF Horn Speaker 15W 100V with Transformer & Fuse

- General purpose 15W horn loudspeaker with transformer and fuse
- Especially suitable for use in industrial sites or tough environments
- To be used together with 100V line amplifier
- With 4 different power tapplings: 2.5W, 5W, 10W and 15W



Size (WxHxD): 253 x 152 x 309 mm Weight: 1.85 kg

Additional Information: IP-66

2131000208

### VLS-30TF Horn Speaker 30W 100V with Transformer

- General purpose 30W horn loudspeaker with transformer for 100V line
- Especially suitable for use in industrial sites or tough environments
- ABS housing and stainless steel bracket ensures good corrosion properties
- With 6 different power tapplings: 5W, 10W, 15W, 20W, 25W, 30W



Size (WxHxD): 315 x 170 x 350 mm Weight: 2.5 kg

Additional Information: IP-66

3006100088

### VML-1520 Horn Speaker, Waterproof

- General purpose 15-Watt, 20-ohm horn loudspeaker
- For use on open deck areas, engine room, etc.
- To be used together with ACM or Talk-Back stations



Size (WxHxD): 250 x 145 x 270 mm Weight: 1.35 kg

Additional Information: IP-67

3006100056

### HP-15TF Horn Speaker, 15W

- General purpose 15 Watt horn loudspeaker
- For use in deck areas, engine room etc.
- With 100V line transformer and fuse
- Adjustable power tapping: 2W - 4W - 7.5W - 15.0W



Size (Ø x D): 200 x 247 mm Weight: 1.7 kg

Additional Information: IP-67

3006100063

### HP-30TF Horn Speaker, 30W

- General purpose 30 Watt horn loudspeaker
- For use in deck areas, engine room etc.
- With 100V line transformer and fuse
- Adjustable power tapping: 2.0W - 3.5W - 7.5W - 15.0W - 20.0W - 30.0W



Size (Ø x D): 237 x 298 mm Weight: 2.3 kg

Additional Information: IP-67

3006100043

### DST-100 Driver Unit for Horn Speaker

- 100 W driver unit for use together with DH-50 horn speaker
- 100V line transformer
- Suitable for covering large areas.
- Adjustable power tapping: 7.5W - 15.0W - 30.0W - 60.0W - 100W



Size (Ø x D): 128 x 176 mm Weight: 2.5 kg

Additional Information: IP-67

3006100036

### DH-50 Waterproof Horn Speaker

- For use together with driver DST-100
- Suitable for covering large areas
- Fiberglass laminated polyester / RAL 7035



Size (Ø x D): 325 x 345 mm Weight: 3.6 kg

Additional Information: IP-67



## LOUDSPEAKERS EX AREA

- ATEX Approved
- 100V line
- Adjustable power tapplings
- Suitable for hazardous areas

2340110016

### JBP-120EExeN

- Ex Junction box for Ex loudspeakers
- 6 possible M20 entries, earth plate and 2.5 mm Wago terminal.



Size (WxHxD): 120 x 47 x 104.5 mm Weight: 0.4 kg

2340020006

### CAREEx-6T Wall Double-Faced Speaker, ATEX, 6W

- Double faced loudspeaker in aluminium
- For Zone 1 & 2
- Used for cabins, hallways etc. in hazardous areas.
- 100V line transformer
- Adjustable power tapping  
0.3W - 0.5W - 1W - 1.5W - 3W - 6W



Size (HxD): 178 X 145 mm Weight: 3,6 kg

Additional Information: IP-67 (EX-chamber)

2340020015

### BA-56EExeNT Ex Ceiling Speaker

- Ceiling loudspeaker for hazardous areas.
- 100V line transformer
- ATEX approved
- 1 x M20 EExe ATEX approved cable gland and 1 x M20 EExe ATEX approved blind plug.
- Material: Aluminum/RAL 9010
- Adjustable power tapping  
0.3W - 0.5W - 1W - 1.5W - 3W - 6W



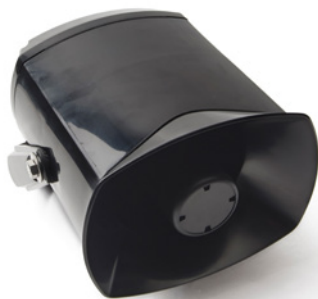
Size (ØxD): 220 X 172 mm Weight: 3.0 kg

Additional Information: IP-67 ATEX approved for Zones 1&2

2340020025

### DSP-15 EExmNT 15W Ex Horn Speaker

- Horn speaker in Antistatic Polyamide, black
- For zones 1 & 2
- 100V line transformer
- Adjustable power tapping:  
2W - 4W - 7.5W - 15W
- Ex db IIB+H2 T4



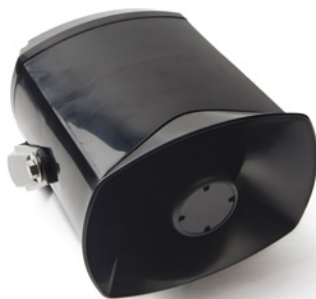
Size (WxHxD): 170 x 144 x 207 mm Weight: 2.2 kg

Additional Information: IP-67

2340020012

### DSP-15 EExmNT 25W Ex Horn Speaker

- Horn speaker in Antistatic Polyamide, black
- For zones 1 & 2
- 100V line transformer
- Adjustable power tapping:  
1.5W - 2.5W - 5W - 6.5W - 15W - 25W
- Ex db IIB+H2 T4



Size (WxHxD): 170 x 144 x 207 mm Weight: 2.2 kg

Additional Information: IP-67

3006100058

### HP-20EExiiNT Horn Speaker 20W, 100V, Ex Zone 2

- Horn speaker in Antistatic Polyamide.
- For zones 1 & 2
- 100V line transformer
- Adjustable power tapping:  
2W - 3.5W - 7.5W - 15W - 20W



Size (ØxD): 237 x 286 mm Weight: 2.3 kg

Additional Information: IP-67  
Certified according to EN 60079-15

## IP LOUDSPEAKERS

- Designed to deliver CCoIP® - Critical Communication over IP
- Ideal for Micro Zone PA and systems that require a limited number of speakers

1023300010

### ELSIR-10C Network Ceiling Loudspeaker, 10W, Ethernet

- Audio Presence - crystal clear audio
- Steel fire dome
- 10W Class D, built-in amplifier
- > 100 dB SPL
- Ideal for Micro Zone PA and systems that require a limited number of speakers
- Each speaker is individually addressable and monitored
- Ideal for speakers installed in remote locations, e.g. roads and railways
- Remote software upgrade and configuration
- Relay output for remote control, e.g. doors, signal lamps, gates
- Powered from the IP network cable using Power over Ethernet (PoE)



**Size (ØxD): 199 x 145,5 mm Weight: 1.4 kg**

Additional Information: 2220040030 Installation kit for IP speakers/TCIS/TFIE/EAPII, cat6A

1023301310

### ELSII-10H Network Horn Loudspeaker, 10W, Ethernet

- Audio Presence - crystal clear audio
- 10W Class D, built-in amplifier
- Dust and water tight
- > 110 dB SPL
- Ideal for Micro Zone PA and systems that require a limited number of speakers
- Each speaker is individually addressable and monitored
- Ideal for speakers installed in remote locations, e.g. roads and railways
- Remote software upgrade and configuration
- Relay output for remote control, e.g. doors, signal lamps, gates
- Powered from the IP network cable using Power over Ethernet (PoE)



**Size (WxHxD): 144x186x207 mm Weight: 1.8 kg**

Additional Information: IP-67  
2220040030 Installation kit for IP speakers/TCIS/TFIE/EAPII, cat6A

# SIGNAL UNITS



3006102041

## EHS-240 Rotary Light - Orange

- Used in noisy areas to indicate a call
- Can be used with all Industrial Stations or Telephones
- Must use CRB-7 when used on Industrial Telephones
- Equipped with 1m Cable
- 24 VDC, 3A



3006102038

## EHS-24B Rotary Light 24VDC Blue

3006102039

## EHS-24G Rotary Light 24VDC Green

3006102040

## EHS-24K Rotary Light 24VDC Clear

3006102042

## EHS-24R Rotary Light 24VDC Red

Size (ØxH): 147 x 220 mm Weight: 0.9 kg

Additional Information: IP-54

3006102036

## EHS-2200 Rotary Light - Orange

- Used in noisy areas to indicate a call
- Can be used with all Industrial Stations or Telephones
- Must use CRB-7 when used on Industrial Telephones
- Equipped with 1m Cable
- 220 VAC



3006102033

## EHS-220B Rotary Light 220VAC Blue

3006102034

## EHS-220G Rotary Light 220VAC Green

3006102035

## EHS-220K Rotary Light 220VAC Clear

3006102037

## EHS-220R Rotary Light 220VAC Red

Size (ØxH): 147 x 220 mm Weight: 0.9 kg

Additional Information: IP-54

3006102032

## EHS-1100 Rotary Light 110VAC - Orange

- Used in noisy areas to indicate a call
- Can be used with all Industrial Stations or Telephones
- Must use CRB-7 when used on Industrial Telephones
- Equipped with 1m Cable
- 110 VAC



2340200001

## EHS-110B Rotary Light 110VAC Blue

2340200002

## EHS-110G Rotary Light 110VAC Green

2340200003

## EHS-110K Rotary Light 110VAC Clear

2340200004

## EHS-110R Rotary Light 110VAC Red

Size (ØxH): 147 x 220 mm Weight: 0.9 kg

Additional Information: IP-54

2340220003

## L-101-24Y Xenon Strobe - Yellow

- Optical signaling device of rugged design for indoor and outdoor use
- 24 - 28 VDC 300mA



2340220000

## L-101-24R Xenon Strobe, 20-28VDC, Red

2340220002

## L-101-24A Xenon Strobe, 20-28VDC, Amber

2340220004

## L-101-24G Xenon Strobe, 20-28VDC, Green

2340220005

## L-101-24B Xenon Strobe, 20-28VDC, Blue

2340220006

## L-101-24C Xenon Strobe, 20-28VDC, Clear

Size (WxHxD): 86 x 86 x 83 mm Weight: 0.2 kg

Additional Information: IP-66

2340220009

## L-101-115Y Xenon Strobe - Yellow

- Optical signaling device of rugged design for indoor and outdoor use
- 115 VAC



2340220007

## L-101-115R Xenon Strobe, 115VAC, Red

2340220008

## L-101-115A Xenon Strobe, 115VAC, Amber

2340220010

## L-101-115G Xenon Strobe, 115VAC, Green

2340220011

## L-101-115B Xenon Strobe, 115VAC, Blue

2340220012

## L-101-115C Xenon Strobe, 115VAC, Clear

Size (WxHxD): 86 x 86 x 83 mm Weight: 0.2 kg

Additional Information: IP-66

2340220015

### L-101-230Y Xenon Strobe - Yellow

- Optical signaling device of rugged design for indoor and outdoor use
- 230 VAC



2340220013

L-101-230R Xenon Strobe, 230VAC, Red

2340220014

L-101-230A Xenon Strobe, 230VAC, Amber

2340220016

L-101-230G Xenon Strobe, 230VAC, Green

2340220017

L-101-230B Xenon Strobe, 230VAC, Blue

2340220018

L-101-230C Xenon Strobe, 230VAC, Clear

Size (WxHxD): 86 x 86 x 83 mm Weight: 0.2 kg

Additional Information: IP-66

3006102011

### BEX-240 Beacon Ex BExBG05D 24VDC ATEX IP67 - Orange

- ATEX approved xenon warning light
- EX II 2 G EEx d IIC T5
- Orange
- Zone 1 & 2



3006102010

BEX-24B Beacon Ex BExBG05D 24V DC ATEX IP67 1x Cable Gland - Blue

3006102012

BEX-24R EX Approved light 24V DC , incl. 1 X Cable Gland, Ex II 2 G - EEx d IIC T5 - Red

2340200006

BEX-24Y Beacon Ex BExBG05D 24V DC ATEX IP67 1x Cable Gland - Yellow

2340200007

BEX-24G Beacon Ex BExBG05D 24V DC ATEX IP67 1x Cable Gland - Green

2340200008

BEX-24C Beacon Ex BExBG05D 24V DC ATEX IP67 1x Cable Gland - Clear

Size (WxHxD): 153 x 154 x 246 mm Weight: 2.45 kg

Additional Information: IP-67

3006102015

### BEX-2300 Beacon Ex BExBG05D 230VAC ATEX IP67 - Orange

- ATEX approved xenon warning light
- EX II 2 G EEx d IIC T5
- Orange
- Zone 1 & 2



3006102016

BEX-220B Beacon Ex BExBG05D 230V AC ATEX IP67 1x Cable Gland - Blue

3006102085

BEX-230G Beacon Ex BExBG05D 230V AC ATEX IP67 1x Cable Gland - Green

3006102086

BEX-230R Beacon Ex BExBG05D 230V AC ATEX IP67 1x Cable Gland - Red

3006090474

BEX-230Y Beacon Ex BExBG05D 230V AC ATEX IP67 1x Cable Gland - Yellow

Size (WxHxD): 153 x 154 x 246 mm Weight: 2.75 kg

Additional Information: IP-67

3006102013

### BEXS-110AC Alarm Horn 230VAC EXD 110dB BEXS110D230

- ATEX approved Sounder Horn
- EExd IIC T4 32T
- 110 dB
- 32 alarm tones
- Zone 1 & 2



3006102014

BEXS-110DC Alarm Horn 24V DC EXD 110dB BEXS110D024

Size (ØxD): 181x 262,6 mm

Weight: AC 3.2 kg DC 3,0kg

Additional Information: IP-67

3006102070

### SON-160 Combined Audio-Visual 24VDC WT 100 dB - Orange

- Well suited for fire and security purposes incorporating high sound output
- Low current consumption, high quality and simple installation



3006102067

SON-16B Combined Audio-Visual - Blue

3006102068

SON-16G Combined Audio-Visual - Green

3006102069

SON-16K Combined Audio-Visual - Clear

3006102071

SON-16R Combined Audio-Visual - Red

Size (WxHxD): 98 x 176 x 83mm Weight: 0.5 kg

Additional Information: IP-56

3006102006

### AL-1000 Combined Audio-Visual 230VAC IP-56 100dB - Orange

- Combined sounder and flash alarm in a small unit
- 32 alarm tones
- 3 stage alarm



3006102059

### PD2100AC Signal Light

- With Bulb E14/15W 60MM, 240V and Lifeboat Symbol
- ABS Plastic
- Cable inlet
- 240VAC
- Supplied complete with filament lamp



Size (WxHxD): 166 x 128 x 111 mm Weight: 0.275 kg

Additional Information: IP-55

3006102005

### AL 105N-WR-0 ALARM LAMP/ HORN 24V DC ORANGE - 106dB

- Well suited for fire and security purposes incorporating high sound output
- Low current consumption, high quality and simple installation



Size (WxHxD): 130 x 210 x 133mm Weight: 0.8 kg

Additional Information: IP-66

3006102002

### A-100 Electronic Alarm 24VDC

- Audible signal device for all systems.
- Several different tones.
- To be wall-mounted in noisy areas like engine room, etc.
- Watertight - 106dB



Size (WxHxD): 114 x 87 x 87 mm Weight: 0.26 kg

Additional Information: IP-56

3006102003

### A-100AC Electronic Alarm 220VAC

- Audible signal device for all systems.
- Several different tones.
- To be wall-mounted in noisy areas like engine room, etc.
- Watertight - 106dB



3006102029

### DHW2-24 Ex Signal Bell 24VDC

- Ex proof loud signal bell with typical tone for warning, calling and indicating.
- Sound pressure approx. 105 dB (A)
- ATEX II 2G Ex de IIC T6



Size (ØxD): 200 x 270 mm Weight: 6.0 kg

Additional Information: For Zones 1 & 2  
IP-66

2340210000

### DHH1-230 Ex Signal Horn 230VAC

- Ex proof Loud signal horn with tone for warning, calling and indicating
- Sound pressure approx. 105 dB (A)
- ATEX II 2G Ex d e IIC T5, T6 Gb



Size (ØxD): 190 x 265 mm Weight: 5.5 kg

Additional Information: For Zones 1 & 2  
IP-66



# WALL-MOUNTED CABINETS



## POLYESTER CABINETS

- Plain wall mounting using a mounting plate.
- Colour grey RAL 7032
- Corrosion resistant
- Double chromed zinc coated steel plates
- Wall mounting set for outside mounting to wall
- Protection: IP-66
- Some models equipped with M20 cable glands

3006202009

### PLM-32 Seawater Resistant Cabinet



**Size (WxHxD):** 215 x 310 x 160 mm  
**Weight:** 2.0 kg

Additional Information: Dimension mounting plate 150 x 250

3006202011

### PLM-43 Seawater Resistant Cabinet



**Size (WxHxD):** 330 x 430 x 200 mm  
**Weight:** 6.7 kg

Additional Information: Dimension mounting plate 365 x 250

3006202013

### PLM-54 Seawater Resistant Cabinet



**Size (WxHxD):** 430 x 530 x 200 mm  
**Weight:** 9.3 kg

Additional Information: Dimension mounting plate 465 x 350

3006202010

### PLM-32M w/ Requested Equipmt. Mounted - 4 x M20 Cable Glands



**Size (WxHxD):** 215 x 310 x 160 mm  
**Weight:** 2.1 kg

Additional Information: If other type of glands needed, please specify. Dimension mounting plate 150 x 250

3006202012

### PLM-43M w/ Requested Equipmt. Mounted - 4 x M20 Cable Glands



**Size (WxHxD):** 330 x 430 x 200 mm  
**Weight:** 6.8 kg

Additional Information: If other type of glands needed, please specify. Dimension mounting plate 365 x 250

3006202014

### PLM-54M w/ Requested Equipmt. Mounted - 4 x M20 Cable Glands



**Size (WxHxD):** 430 x 530 x 200 mm **Weight:** 9.4 kg

Additional Information: If other types of glands needed, please specify. Dimension mounting plate: 465 x 350.

2810010010

### PLM-43MH with Requested Equipment Mounted - 4 x M20 Cable Glands, Heater and Thermostat

- Equipped with heater and thermostat
- For equipment requiring stable temperature
- Other features as other PLM cabinets



**Size (WxHxD):** 330 x 430 x 200 mm

**Additional Information:** Assembly included  
**110VAC on request**

## INDOOR STAINLESS STEEL CABINETS

- Compact enclosure AE stainless steel 1.4301 (AISI 304) with mounting plate
- Protection categories Nema: NEMA 4X  
Protection categories EC60 529: IP-66

3006090378

### 76R1005 Stainless Steel Cabinet

- Compact enclosure AE stainless steel 1.4301 (AISI 304) with mounting plate



Size (WxHxD): 380 x 300 x 210 mm Weight: 8.4 kg

Additional Information: IP-66 NEMA Certificate  
3006090379 76R1005M inclusive assembly

3006090380

### 76R1007 Stainless Steel Cabinet

- Compact enclosure AE stainless steel 1.4301 (AISI 304) with mounting plate



Size (WxHxD): 500 x 500 x 210 mm Weight: 15,7 kg

Additional Information: IP-66 NEMA Certificate  
3006090382 76R1007M inclusive assembly

## OUTDOOR STAINLESS STEEL CABINETS

- Compact enclosure AE stainless steel 1.4404 (AISI 316L) with mounting plate
- Protection categories Nema: NEMA 4X  
Protection category EC60 529: IP-66

2810010071

### WCAB-1005 Cabinet Marine Grade

- Compact enclosure AE stainless steel 1.4404 (AISI 316L) with mounting plate
- IP-66



Size (WxHxD): 380 x 300 x 210 mm Weight: 8 kg

Additional Information:  
1153901101 WCAB-1005M inclusive assembly

2810010072

### WCAB-1010 Cabinet Marine Grade

- Compact enclosure AE stainless steel 1.4404 (AISI 316L) with mounting plate
- IP-66



Size (WxHxD): 600 x 600 x 210 mm Weight: 23.5 kg

Additional Information:  
1153901102 WCAB-1010M inclusive assembly

# FLOOR-MOUNTED CABINETS

2810010091

## CAB8K11F Cabinet 19" 11HU

- 19-inch fixed frame for up to 11 HU.
- IP-20



Size (WxHxD): 600 x 665 x 880 mm

2810010092

## CAB8K24F Cabinet 19" 24HU

- 19-inch fixed frame for up to 24HU.
- IP-20



Size (WxHxD): 600 x 1265 x 640 mm

- Material: Steel
- Color: RAL 7035
- Floor mounted
- Cable inlet bottom (Top available on request)



## STEEL CABINETS WITH FIXED FRAME

2810010050

## CAB15F Cabinet 19" 15HU

- Cabinet variant 15 HU, 600 wide and 600 deep.

Size (WxHxD): 610 x 965 x 630 mm

2810010051

## CAB24FW Cabinet 19" 24HU

- Cabinet variant 24 HU, 800 wide and 600 deep.
- 19-inch fixed frame for up to 24 HU.
- IP-22



Size (WxHxD): 810 x 1335 x 680 mm

2810010052

## CAB24FWD Cabinet 19" 24HU

- Cabinet variant 24 HU, 800 wide and 800 deep.
- 19-inch fixed frame for up to 24 HU.
- IP-22



Size (WxHxD): 810 x 1335 x 880 mm

## STEEL CABINETS WITH SWING FRAME

2810010061

## CAB24SW Cabinet 19" 24HU

- Cabinet variant 24 HU, 800 wide and 600 deep.
- 19-inch swing frame for up to 22 HU.
- IP-22



Size (WxHxD): 810 x 1350 x 680 mm

2810010062

## CAB24SWD Cabinet 19" 24HU

- Cabinet variant 24 HU, 800 wide and 800 deep.
- 19-inch swing frame for up to 22 HU.
- IP-22



Size (WxHxD): 810 x 1350 x 880 mm

2810010053

## CAB42F Cabinet 19" 42HU

- Cabinet variant 42 HU, 600 wide and 600 deep.

Size (WxHxD): 610 x 2165 x 630 mm

2810010054

## CAB42FW Cabinet 19" 42HU

- Cabinet variant 42 HU, 800 wide and 600 deep.

Size (WxHxD): 810 x 2165 x 630 mm

2810010055

## CAB42FWD Cabinet 19" 42HU

- Cabinet variant 42 HU, 800 wide and 800 deep.

Size (WxHxD): 810 x 2165 x 830 mm

2810010056

## CAB24F Cabinet 19" 24HU

- Cabinet variant 24 HU, 600 wide and 600 deep.

Size (WxHxD): 610 x 1350 x 680 mm

- 19-inch fixed frame for up to 42 HU.
- IP-22



2810010064

## CAB42SW Cabinet 19" 42HU

- Cabinet variant 42 HU, 800 wide and 600 deep.
- 19-inch swing frame for up to 40 HU.
- IP-22



Size (WxHxD): 810 x 2165 x 630 mm

2810010065

## CAB42SWD Cabinet 19" 42HU

- Cabinet variant 42 HU, 800 wide and 800 deep.
- 19-inch swing frame for up to 40 HU.
- IP-22



Size (WxHxD): 810 x 2165 x 830 mm



**www.zenitel.com**

---

DOC NO

**A100K11301**

18.10.2018

**sales@zenitel.com**

Zenitel and its subsidiaries assume no responsibility for any errors that may appear in this publication, or for damages arising from the information therein. Vingtor-Stentofon products are developed and marketed by Zenitel. The company's Quality Assurance System is certified to meet the requirements in NS-EN ISO 9001. Zenitel reserves the right to modify designs and alter specifications without notice. ZENITEL PROPRIETARY. This document and its supplementing elements, contain Zenitel or third party information which is proprietary and confidential. Any disclosure, copying, distribution or use is prohibited, if not otherwise explicitly agreed in writing with Zenitel. Any authorized reproduction, in part or in whole, must include this legend. Zenitel – All rights reserved.