

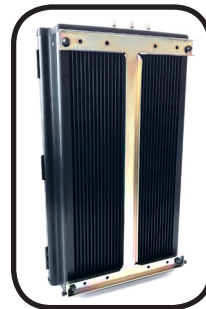
BS2000 WALL MOUNTED BASE STATION & REPEATER

- FOR VOICE & DATA



HIGHLIGHT

- FULL RF BANDWIDTH
VHF: 68 - 88 MHz
VHF: 135 - 174 MHz
UHF: 335 - 410 MHz
UHF: 400 - 470 MHz
- VOICE & DATA
- CHANNEL SPACING
12,5 / 20 / 25 KHz
- MULTI CHANNELS
- 5-25 WATT / 5-50 WATT
OPTION: 100 WATT
- CONTINUOUS OPERATION
- CTCSS SIGNALING /
CARRIER CONTROLLED REPEATER
- AVAILABLE IN NUMEROUS
CONFIGURATIONS
- WEATHERPROOF CABINET FOR
WALL MOUNTING
- RUGGED CONSTRUCTION
- SIMPLEX, SEMI-DUPLEX & DUPLEX



Bracket for wall mount

The BS2000 series of base stations & repeaters are designed for continuous operation under harsh climatic conditions and are available for all PMR frequency bands. The BS2000 is also available for remote control.

PROFESSIONAL RADIO COMMUNICATION

The BS2000 repeater wall mount model is designed for two-way voice and data communication in the VHF and the UHF frequency bands.

The design of the BS2000 is modular and the cabinets are designed to house different transceivers, modules, I/O interfaces and control units, making the BS2000 very versatile.

The wall mounted BS2000 cabinet BK001 is weatherproofed. All cabinet types provide an effective heat sink allowing the BS2000 to operate on a 100 % duty cycle.

The BS2000 can be configured to fit a customer's exact requirements in terms of: Frequency Band, Mode of Operation, Signalling System, Data or Voice or a combination of both, Supply Voltage / UPS and Output Power.

The BS2000 is available in a version with duplicated transceivers, which enables a hot and standby configuration with automatic switch-over to the standby transceiver(s) in case the main transceiver(s) turns faulty.

To facilitate the site service, the wall mounted cabinets are constructed in such a way that it can be opened in an 180° angle leaving all the parts freely accessible. The BS2000 cabinets meet the IP54 standard for ingress of dust and water.

The BS2000 can be configured as a stand-alone repeater or as a base station with or without repeat function.

In order to ensure the highest quality and reliability of the products, each TP Radio transceiver is exposed to an extensive final test procedure, which includes exposing the transceiver to a temperature cycle ranging from - 25 °C to + 55 °C, before leaving the factory.

Specifications:

General

	UHF I	UHF II	VHF 2m	VHF 4m
Frequency Range	335-410 MHz	400-470 MHz	135-174 MHz	68-88 MHz
Number of channels		up to 32, option 127		
Channel spacing		12.5, 20 or 25 KHz		
Frequency error		± 2 ppm		
Mode of operation		Simplex / Semi-duplex / Duplex (with filter)		
Antenna impedance		50 Ohm		
Temperature range		-30° to + 70°C		
Power supply		13.2 V Nominal.		
Dimensions		H. 530, W. 320, D. 125 mm (BK001)		
Weight		Approx. 16kg (Fully equipped BK001)		

Transmitter

Output power		5 - 25 W (25 W model) 5 - 50 W (50 W model) (only 25W for VHF 4m - Mid band)		
Adj. Channel power		(Approx. 0,5-1.0 dB insertion loss on the Duplex filter)		
Intermod. attenuation		78 dB below carrier		
Spurious conducted		40 dB (70 dB with circulator)		
Spurious radiated		less than - 40dBm		
Max. Deviation		less than - 45dBm		
Modulation distortion		+/- 5 KHz / 25 KHz channel		
Signal / noise ratio		< 2 % @ +/- 3.0 KHz		
AF freq. Response		45 dB		
Current drain		300 - 3000 Hz + 6 dB octave		
Stand-by		25 W (6.5 A) 50 W (10 A)		

The UHF version is in conformity for On Board Communication according to EN 300 720 and fulfils the IEC 60945 marine standards. A perfect tool to fulfilment of the SOLAS requirement.

The Specifications are typical and subject to change without prior notice. 02.11.2017

Receiver

1. Intermediate freq.	45 MHz
2. Intermediate freq.	450 KHz
Sensitivity @ 20 dB	VHF: 0.4 µV UHF: 0.5 µV
AF output power	4 W
AF distortion	< 10 %
AF freq. Response	300 - 3000 Hz - 6 dB / Octave
Signal / noise ratio	> 45 dB
Co-channel rejection	- 3 dB
Adjacent channel selec.	> 73 dB
Spurious rejection	> 75 dB
Intermodulation sel.	> 70 dB
Blocking	> 100 dB
Spurious conducted	> - 60 dBm
Spurious radiated	> -70 dBm
Squelch level	Internal adjustable level

Power Supply

110/120 or 220/240 VAC 50/60 Hz, or 13,2VDC - max. 8 Amps at 25W TX power. Emergency or back-up power supply according to customer specifications. The total power consumption is dependent of the modules used.

Signalling

Standard systems CCIR / ZVEI / EEA / CTCSS & DTMF.
Data transmission: FFSK 1.200, 2.400 & 4.800 bps.
GMSK: 9.600, 19.200 & 26.400 bps. on 25KHz channel spac-

CONFORMS ACCORDING TO THE DIRECTIVES: RoHS 2011/65/EU, MED 2014/90/EU & RED 2014/53/EU - IP54 WEATHERPROOF CABINET.

APPLIED STANDARDS: EN 300 086 - EN 300 720 (ANALOG PART) - EN 300 113 - EN 300 219 - EN 3001 489

02.11.2017

Dealer:



TP RADIO

Agenvvej 37, DK - 2670 Greve

Phone: +45 43 90 60 48, Fax: +45 43 90 52 07

Mail: sales@tpradio.dk, Web: www.tpradio.dk